

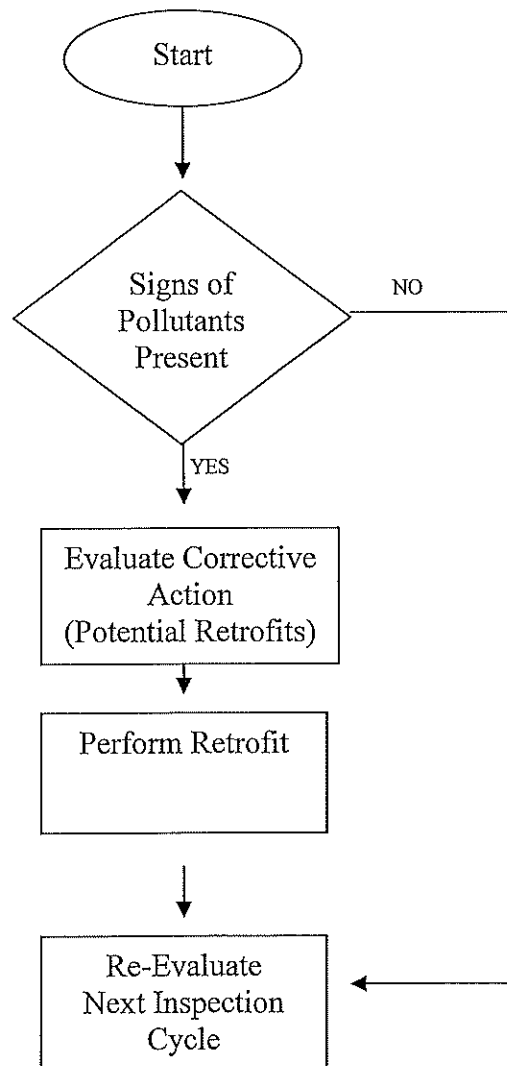
## Procedure to Assess Existing County-Owned Flood Management Projects for Water Quality Impacts

### Purpose

The purpose of this assessment is to evaluate existing County-owned ponds to determine if they need to be retrofitted to improve the treatment of water quality.

### Assessment Procedure

The following flowchart for will be used for decision-making regarding potential retrofits:



An inspection will be performed using the attached water quality assessment checklist. The following indicators will be used to determine the presence of pollutants in the pond or at the outfall:

- Excessive algae growth
- Discharge water turbidity
- Discharge water odor
- Discharge water color
- Presence of floatable matter
- Sediment deposits downstream
- Pond discharges to 303(d) listed stream

If the presence of pollutants is indicated, the County will perform an engineering assessment for potential retrofits for water quality treatment based on the design criteria in the *Georgia Stormwater Management Manual*.

Locations with Existing Structures to be Assessed

1. Government Annex
2. Veterans Park
3. Bogart Sports Complex
4. Courthouse
5. Jail/EOC

**Water Quality Assessment Checklist**Date: 4-8-19Inspected by: Amy MorrisonStructure Type: detention pondLocation: Jail/EOC**\*ASSESSMENT SHOULD BE CONDUCTED WITHIN 1 HOUR OF RAIN EVENT\***Visual ObservationsExcessive algae growth in pond: (circle one) Yes ☐ No ☒Available storage for water quality treatment: (circle one) Yes ☒ No ☐Sedimentation around discharge pipe: (circle one) Yes ☐ No ☒Discharge water turbidity: (circle one) None ☒ Low ☐ Medium ☐ HighPresence of floatable matter: (circle one) Yes ☐ No ☒

\*If yes, describe: \_\_\_\_\_

Discharge water color: clearDischarge water odor: noneFollow-up action warranted: (circle one) Yes ☐ No ☒

Describe recommended follow-up action (if needed): \_\_\_\_\_

---

---

---

---

---