

# SPECIAL USE # P25-0228 - OCONEE MEDICAL PROPERTIES, LLC

Parcel #  
C-01-006A

C-01-006A

Arizona Blvd

Silver Leaf Rd

Dean Dr

Jimmy Daniel Rd

Orchard Walk

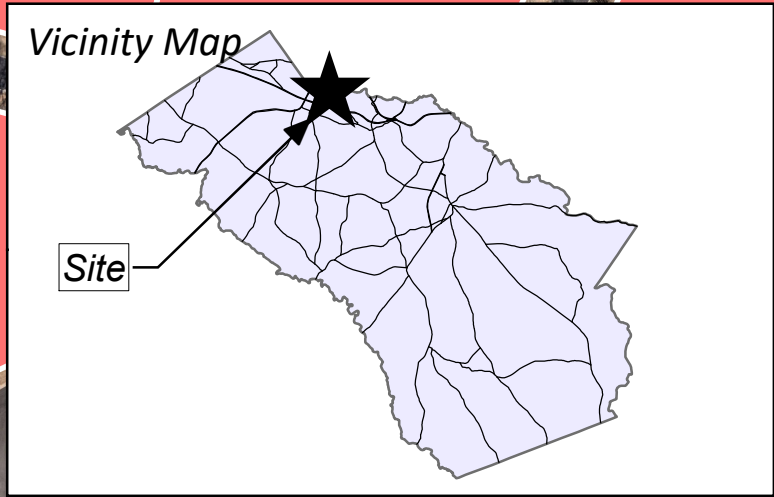
1:2,042

0 190 380 760 1,140 1,520

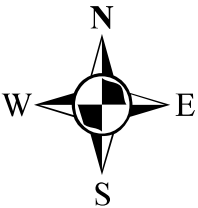
Feet



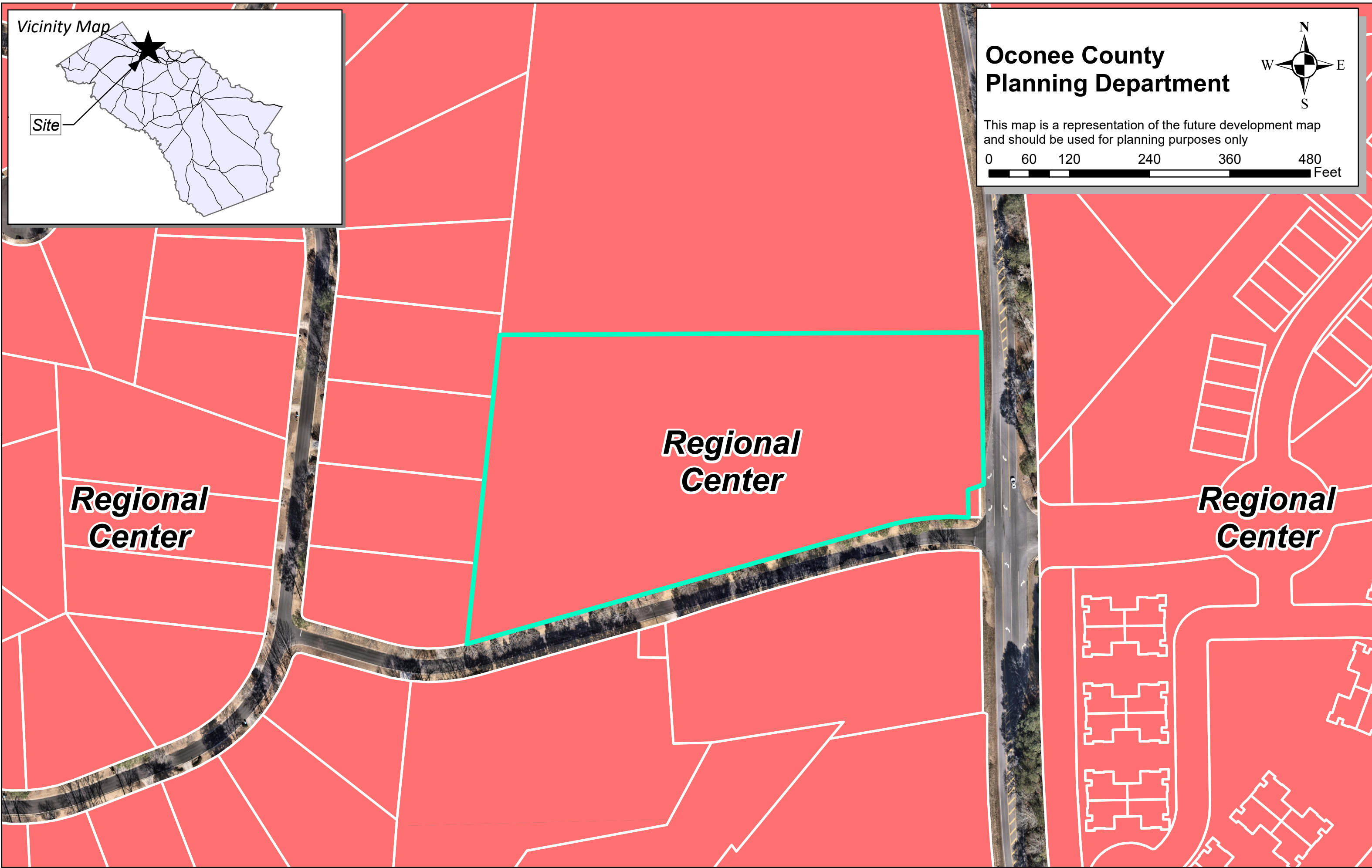
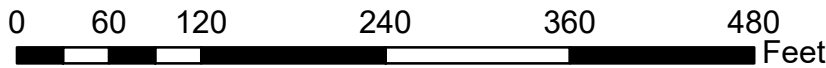




# Oconee County Planning Department

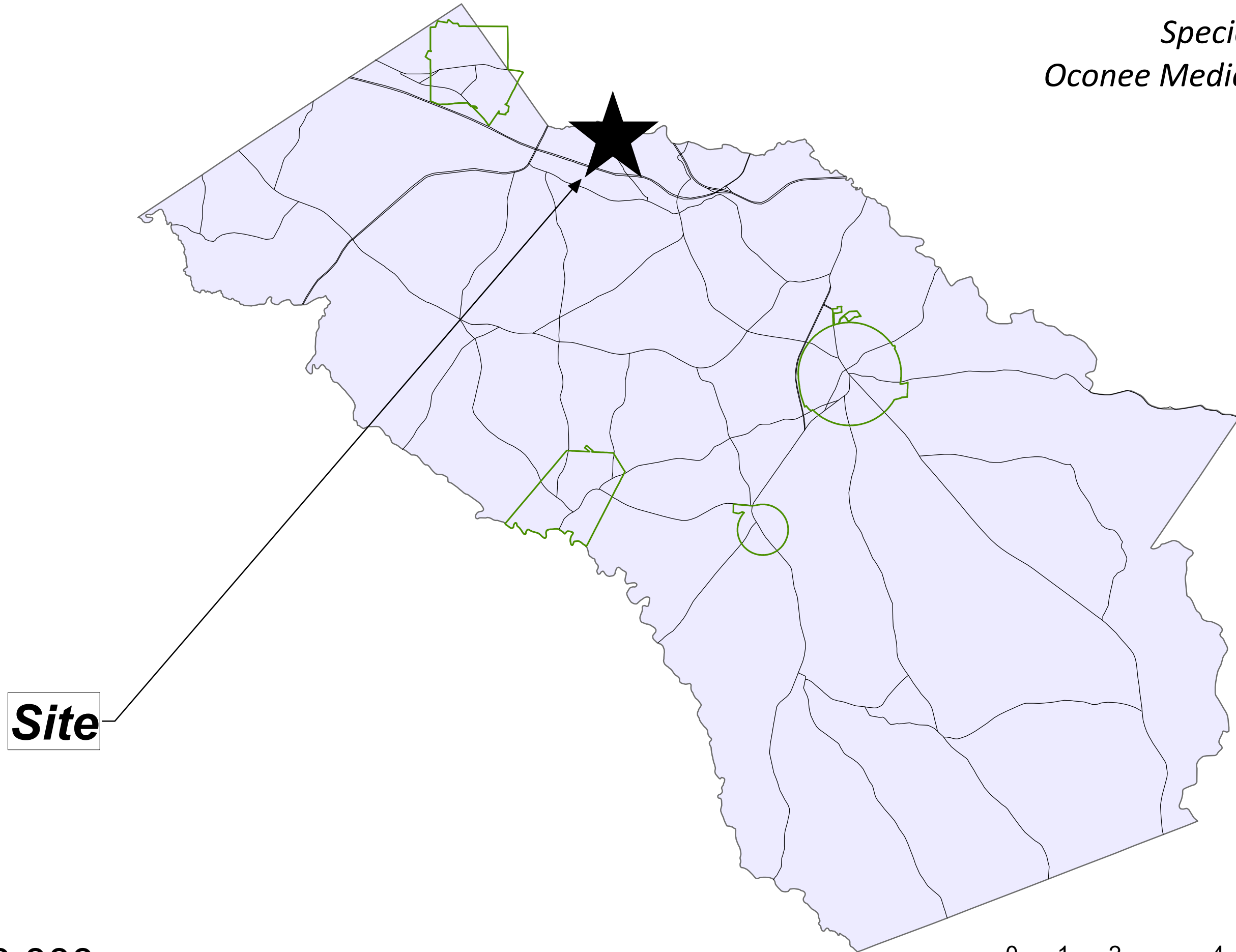


This map is a representation of the future development map and should be used for planning purposes only





*Location Map -  
Special Use # P25-0228  
Oconee Medical Properties, LLC*



**Site**

1:120,000

0 1 2 4 6 8 Miles



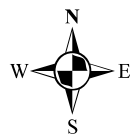


**Zoning**

- AG
- AR-3
- AR
- R-1
- R-2
- R-3
- M-H
- B-1
- B-2
- O-I-P
- O-B-P
- I

**Oconee County  
Planning Department**

This map is representative of current county zoning  
and should be used for planning purposes only.



1:2,000