

# SPECIAL USE # P25-0288 - Living Faith Fellowship Inc.

Parcel #  
C-03-014A

C-03-014A

Macon Hwy

N Macon Hwy

Athens Ridge Blvd

Redwood Ln

Black Oak Dr

Ivywood Dr

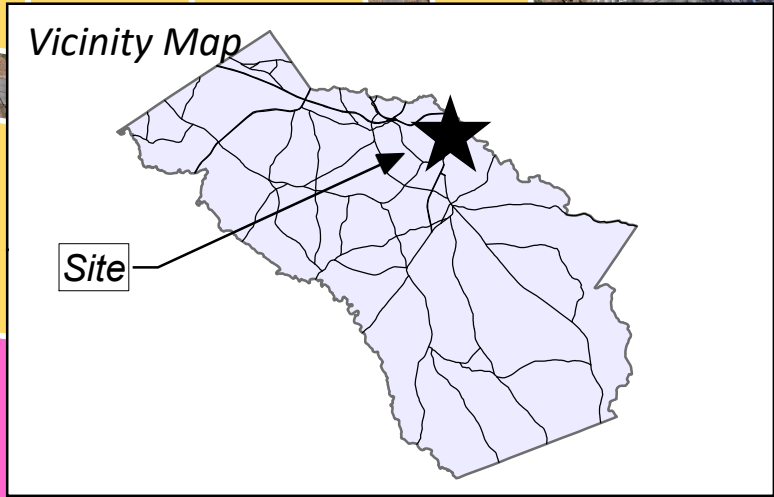
1:2,188

0 205 410 820 1,230 1,640

Feet





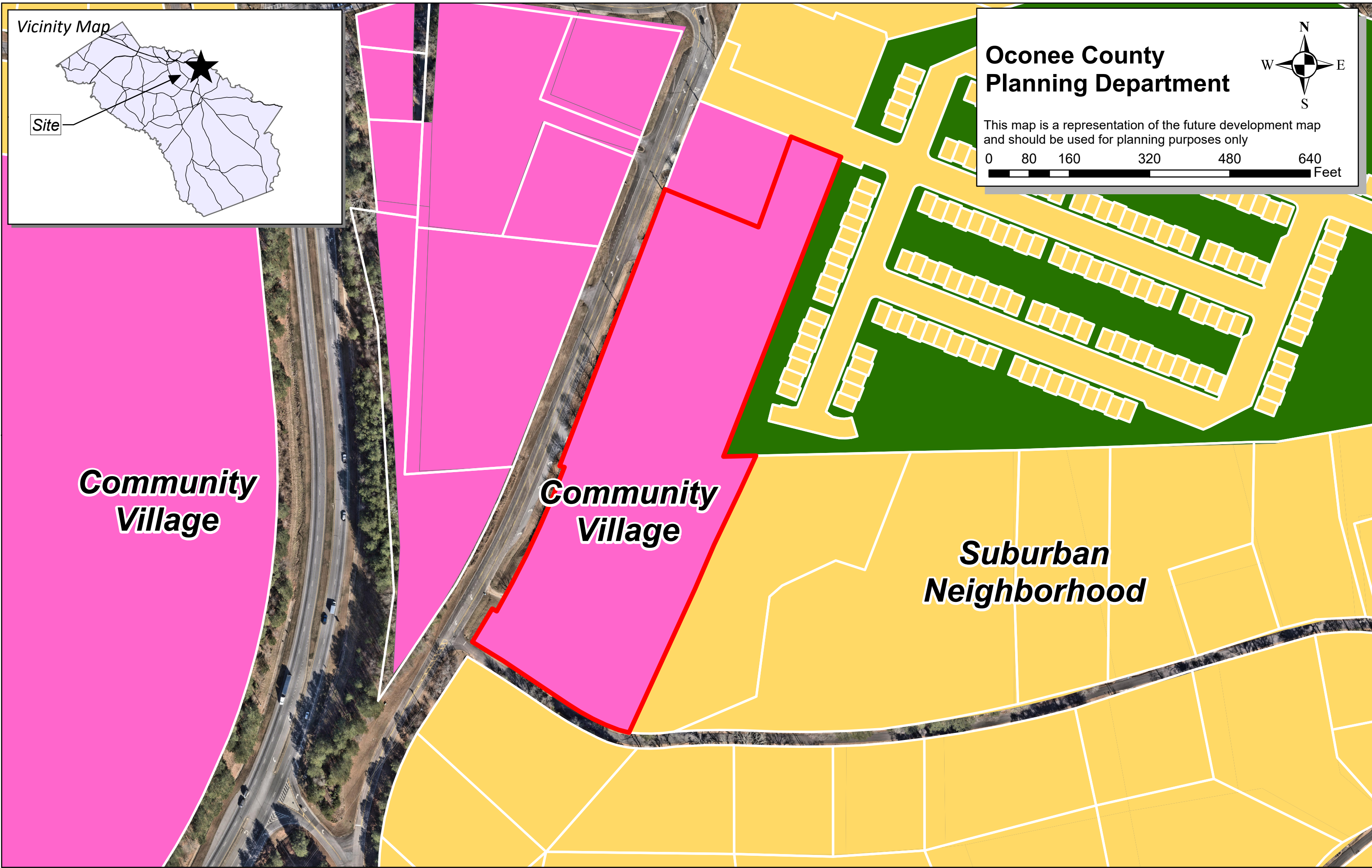


**Oconee County  
Planning Department**

This map is a representation of the future development map and should be used for planning purposes only

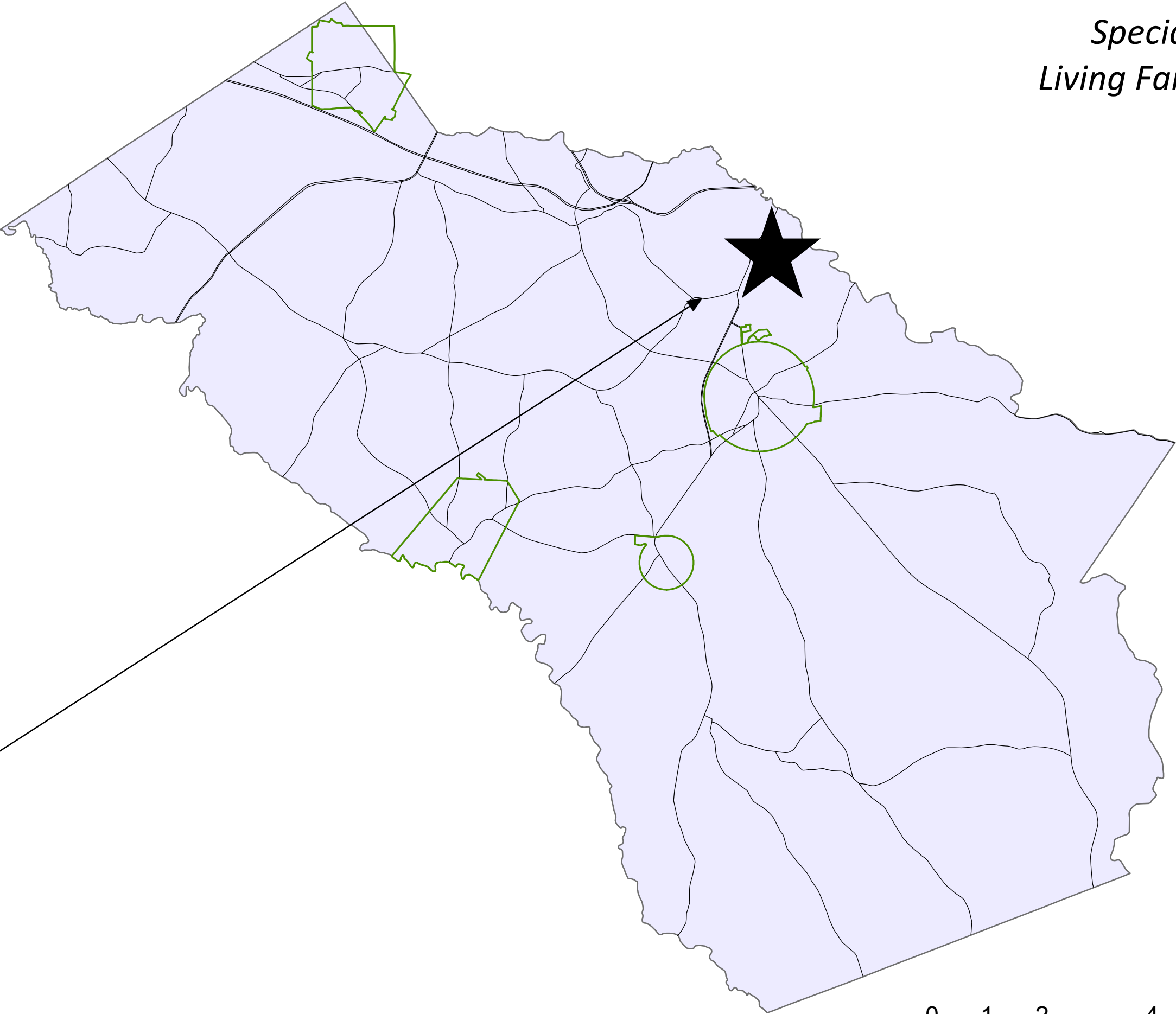
0 80 160 320 480 640 Feet

This block contains the title 'Oconee County Planning Department', a north arrow, a disclaimer, and a scale bar in feet.



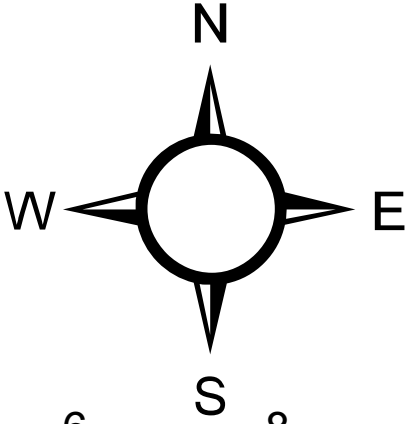
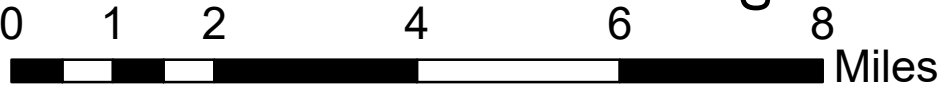


*Location Map -  
Special Use # P25-0288  
Living Faith Fellowship Inc.*

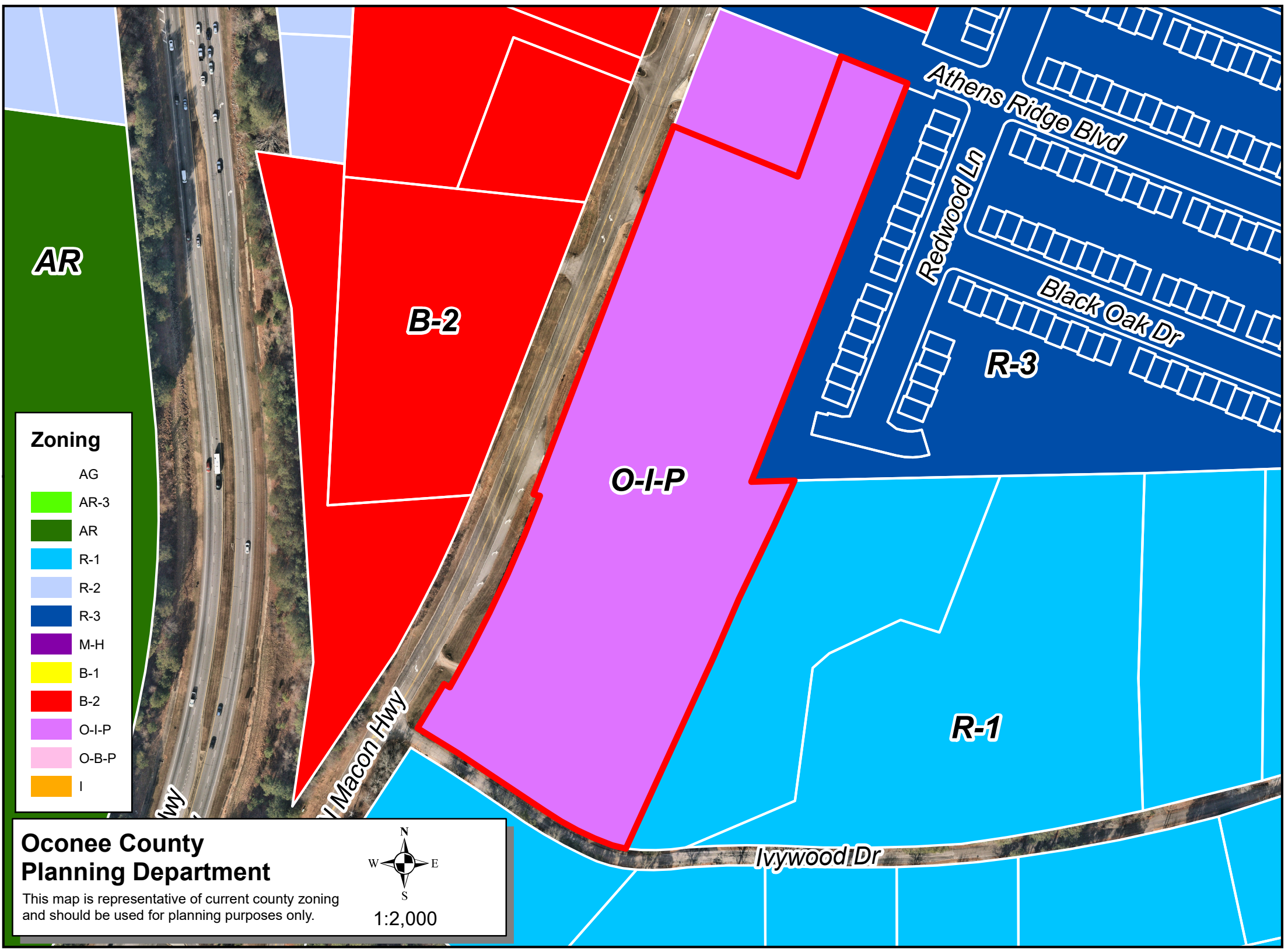


**Site**

1:120,000







AR

B-2

O-I-P

R-3

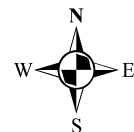
R-1

### Zoning

- AG
- AR-3
- AR
- R-1
- R-2
- R-3
- M-H
- B-1
- B-2
- O-I-P
- O-B-P
- I

## Oconee County Planning Department

This map is representative of current county zoning  
and should be used for planning purposes only.



1:2,000